

A NEW SPECIES OF STICK INSECT (PHASMATODEA: HETEROPTERYGIDAE: OBRIMINAE: OBRIMINI) FROM CEBU ISLAND, PHILIPPINES

Oliver Zompro¹ and Orlando L. Eusebio²

ABSTRACT

A new species of *Theramenes* Stål, 1875, *Theramenes mandirigma* Zompro & Eusebio **sp. nov.** (Phasmatodea: Heteropterygidae: Obriminae: Obrimini), is described and illustrated from the Philippine island of Cebu. It differs from the only other species in the genus, *T. olivaceus* (Westwood, 1859), by the number of tubercles on the tergum and the smaller size.

Key words: Phasmatodea, *Theramenes mandirigma* n. sp., Obrimini, Philippines.

INTRODUCTION

The Phasmatodea of the Philippines is still poorly studied. Most typical for this faunistic area are the Obrimini, a tribe of the Heteropterygidae: Obriminae. The majority of the species in this tribe are endemic to the Philippines and only a few occur in Borneo. It was revised by Rehn & Rehn (1939) and their revision included descriptions of a considerable number of genera and species new to science. Further descriptions of Philippine Obrimini were recently written by Zompro (1996). Hitherto, the genus *Theramenes* Stål, 1875, has been represented only by its type-species, *Theramenes olivaceus* (Westwood, 1859, = *Theramenes dromedarius* Stål, 1875, synonymized by Günther, 1934) from Talaud Island. A second species is here described from a secondary forest on Cebu Island.

This is the third paper of an on-going collaborative work on Philippine Phasmatodea.

DESCRIPTION OF NEW SPECIES

Theramenes mandirigma Zompro & Eusebio, new species.

Figs. 1-3

Diagnosis. A typical species of *Theramenes* Stål, 1875, differing from the only other species *T. olivaceus* (Westwood, 1859) by the spination of the pro- and mesothorax, the smaller size and the presence of two prominent median tubercles on the mesotergum instead of only one.

Received 03 March 2001; accepted 01 April 2001.

¹ Max-Planck-Institute for Limnology, Tropical Ecology Working Group, August-Thienemannstraße 2, 24306 Plön, Germany. E-mail: zompro@mpil-ploen.mpg.de; Website: www.sungaya.de

² Museum of Natural History, University of the Philippines Los Baños, College, Laguna, 4031 Philippines. E-mail: orlyeusebio@hotmail.com

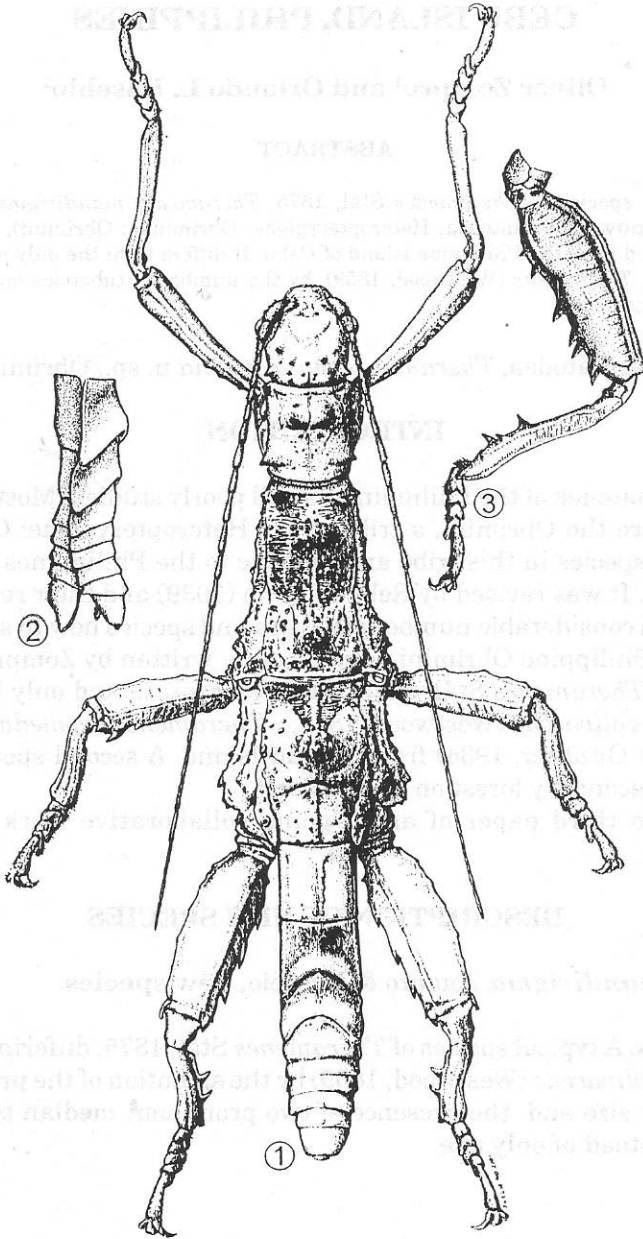


Figure 1-3. *Theramenes mandirigma*: 1. Male, holotype, dorsal view; 2. Terminal abdominal segments, lateral, 3. Hindleg, extrolateral.

Description. Male: General color of head and body brown; tubercles, spines on tergum, mid-, hindlegs and abdomen darker.

Head. Rounded subquadrate, vertex slightly elevated. Eyes projecting hemispherically. Lateral and median coronals distinct. Only one occipital-medial present, supra-orbitals prominent.

Antennae with 26 segments, projecting beyond median segment. Scapus slightly flattened, lateral margins broad, depressed, pedicellus half as long and two thirds as wide, subcylindrical. Succeeding segments increasingly longer.

Prothorax. Quadrate, slightly shorter than head, with distinct antero- and postero-lateral pronotals, lateral pronotals small and indistinct. Posterior mesal pronotals dominant, produced as large roundly pyramidal spines, touching each other basally.

Mesothorax. Trapezoidal, posteriorly dilating. All lateral mesonotals of similar size. Anterior mesonotals, prominent, directed dorsolaterally, posterior mesonotals of equal size, directed laterally, accompanied by two smaller ones laterally. Posterior half of segment elevated. Two prominent tubercles each with two major apices and several minor ones around them present on anterior and posterior areas; distinct median line seemingly connecting these tubercles.

Metathorax. Dilating in posterior half, all tubercles and spines small, posterior-metanotals distinct. Median tubercle of same size and morphology as posterior one in metathorax, base surrounded laterally by two rows of small tubercles. Median line distinct in anterior part.

Abdomen. Median segment slightly longer than half as long as metathorax to which it is fused or fully integrated, almost quadrate, with several indistinct tubercles. Abdominal segment II slightly longer than median segment, parallel-sided. Sternum of II and III with distinct median carina, on IV only in anterior half. Segment III dilating posteriorly, posterior margin deeply integrated in III, thus, whole segment V-shaped dorsally. V as long as IV and as wide as III, integrated in IV by half its length. VI and VII as wide as II, very short, disc-like. VIII distinctly narrower than VIII, posterolateral margins slightly projecting. IX as long as VIII but narrower. X narrower than previous segments, narrowed posteriorly, almost as long as VIII and IX combined, posterior edges rounded. Supra anal plate visible, very short, rounded rectangular. Subgenital plate boat-like, posterior margin broad. Cerci flat, short, triangular; vomer triangular.

Legs. Profemora quadrate in cross-section, anterior half intralaterally depressed. Protibiae slightly shorter, curved basally slightly elevated dorso-apically, with distinct area apicalis. Probasitarsi longer than second tarsite, second to fourth increasingly shorter, fourth very short, disc-like, fifth as long as previous tarsites combined. First to third segment with prominent, triangular carina. Ungui strongly curved.

Mesofemora distinctly broadened, quadrate in cross-section, dorsolateral edges with some indistinct tubercles, ventrolateral edges with one prominent spine apically and a short one before it. Mesotibia also quadrate in cross-section, slightly elevated dorsoapically. Meso- and metatarsi structured as protarsi.

Metafemora strongly broadened, anterior one - third part considerably elevated dorsally, its dorsolateral edges with two distinct spines; posterior two thirds with several indistinct tubercles. One distinct spine present on lateral edges ventroapically, exterior one larger than interior one, a bigger middle spine on edges and two promi-

ment ones before femoro-tibial joint. Metatibiae like mesotibiae, ventrolateral edges with spine medially and a second one before apex. Area apicalis of meso- and metafemora with a spine medioapically.

Measurements (mm): Total length: 41.3; head: 5.0; prothorax: 4.5; mesothorax: 9.0; metathorax: 5.2; median segment: 2.9; profemora: 9.0; protibia: 8.0; mesofemora: 6.8; mesotibia: 6.6; metafemora: 8.9; metatibia: 10.0.

Habitat. According to Ms.M. Pedregosa, the collector, the specimen was found in secondary limestone forest. Permanent streams or ponds are not present, permanent humidity was only found in several limestone-holes in the ground.

Holotype: Male, Philippines, Cebu I., Alcoy, secondary forest, 1. Apr. 2000, leg. M. Pedregosa [UPLBMNHC No. PHA-00329].

Etymology. The specific epithet *mandirigma*, Tagalog for "warrior", is used to name this striking species because of its strongly armed body and appendices.

ACKNOWLEDGEMENTS

The authors want to thank Dr. Victor P. Gapud for supplying the specimen described, Ms. Marisol "Sol" Pedregosa for information on the habitat, Prof. Dr. Joachim Adis and Mr. Ireneo L. Lit Jr. for comments on the manuscript and Mr. Ingo Voerke for his hospitality and support during the author's field works in the Philippines.

LITERATURE CITED

- GUNTHER, K. 1934. Phasmoiden von den Talaud-Inseln und von der Insel Morotai, mit kritischen Bemerkungen über einzelne Arten und einem zoogeographischen Anhang. Sitz.-Ber. Ges. Naturfr. Berlin: 75-94.
- REHN, J.A.G. & REHN, J.W.H. 1939. The Orthoptera of the Philippine Islands. Part I. - Phasmatidae; Obriminae. Proc. Acad. Nat. Sci. Philad. 90: 389-487, pls. 31-38.
- STAL, C. 1875. Recensio Othopterorum. Revue critique des Orthopteres decrits par Linne, de Geer et Thunberg. P.A. Norstedt & Söner, Stockholm.
- WESTWOOD, J.O. 1859. Catalogue of the Orthopterous Insects in the Collection of the British Museum. I. Phasmatidae. British Museum, London, 196 pp.
- ZOMPRO, O. 1996. Beiträge zue Kenntniss philippinischer Phasmiden, I. Ent. Z. 106(4): 160-164.
- ZOMPRO, O. 1996. Bemerkungen über Philippinische Obriminen, mit einer Neubeschreibung (Phasmatodea: Heteropterygidae: Obriminae). Ent. Z. 106(11): 450-456.
- ZOMPRO, O. & O.L. EUSEBIO. 2000. *Phasmotaenia elongata*, n. sp., a new stick insect (Phasmatodea: Phasmatidae) from the Philippine Islands. Philipp. Ent. 14(1): 65-73.
- ZOMPRO, O. & O.L. EUSEBIO. 2000. A new genus and species of stick insect (Phasmatodea: Heteronemiidae: Lonchodinae) from the Philippine Islands. Philipp. Ent. 14(2): 131-135.